

Attachment B

Concept Design

DIXON STREET PUBLIC DOMAIN UPGRADES

14



Concept Design

Inviting energy flow, respecting tradition, celebrating culture

SCOPE ELEMENTS

Restoration of the Gates

A separate project running in parallel with close coordination

Uses and services

Lighting and electrical service upgrades to support events such as the Friday Night Markets

Paving Inserts

For a new creative overlay that brightens the street

Creative lighting

For vibrancy, cultural expression, and a changing program

Furniture and public domain elements

For more comfort, a variety of seating options, and a unique identity

Tree management

To better balance sunlight and shade

15

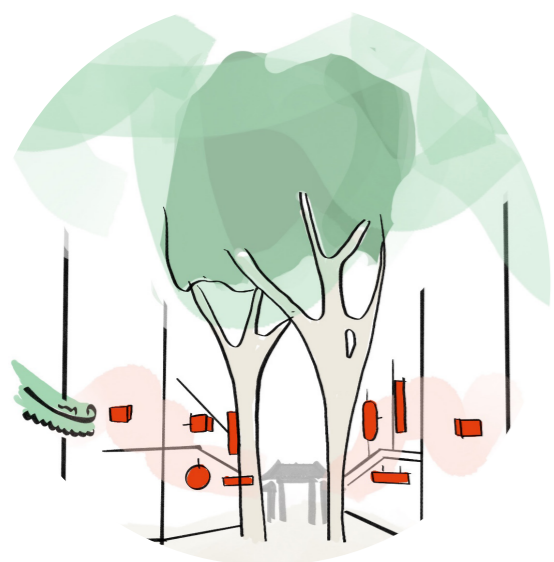


Trees

TREES

Opening up the canopy to balance light and shade

16



Retention of nine trees
To maintain the unique character of Dixon St

Selective removal of three suppressed trees
To improve flow and introduce more light

Removal of four trees
To open the canopy, introduce more light and improve flow

Public Domain

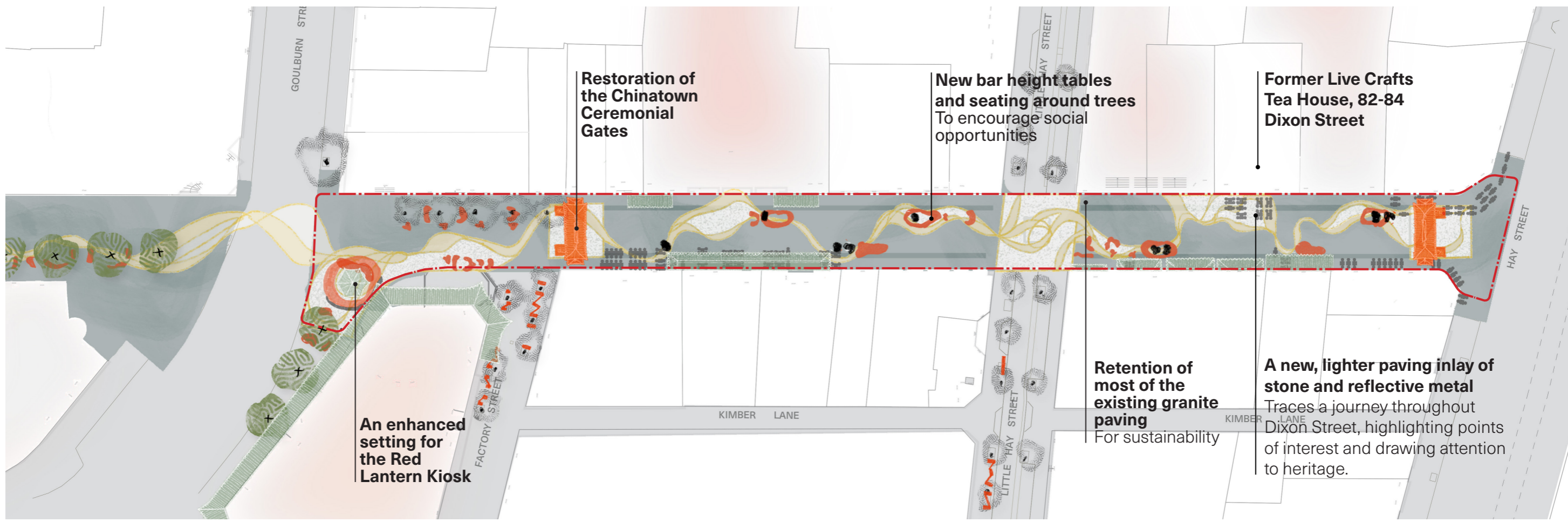


SEATING
Increasing public seating opportunities



PAVING
Paving inserts to encourage and guide movement through the street.

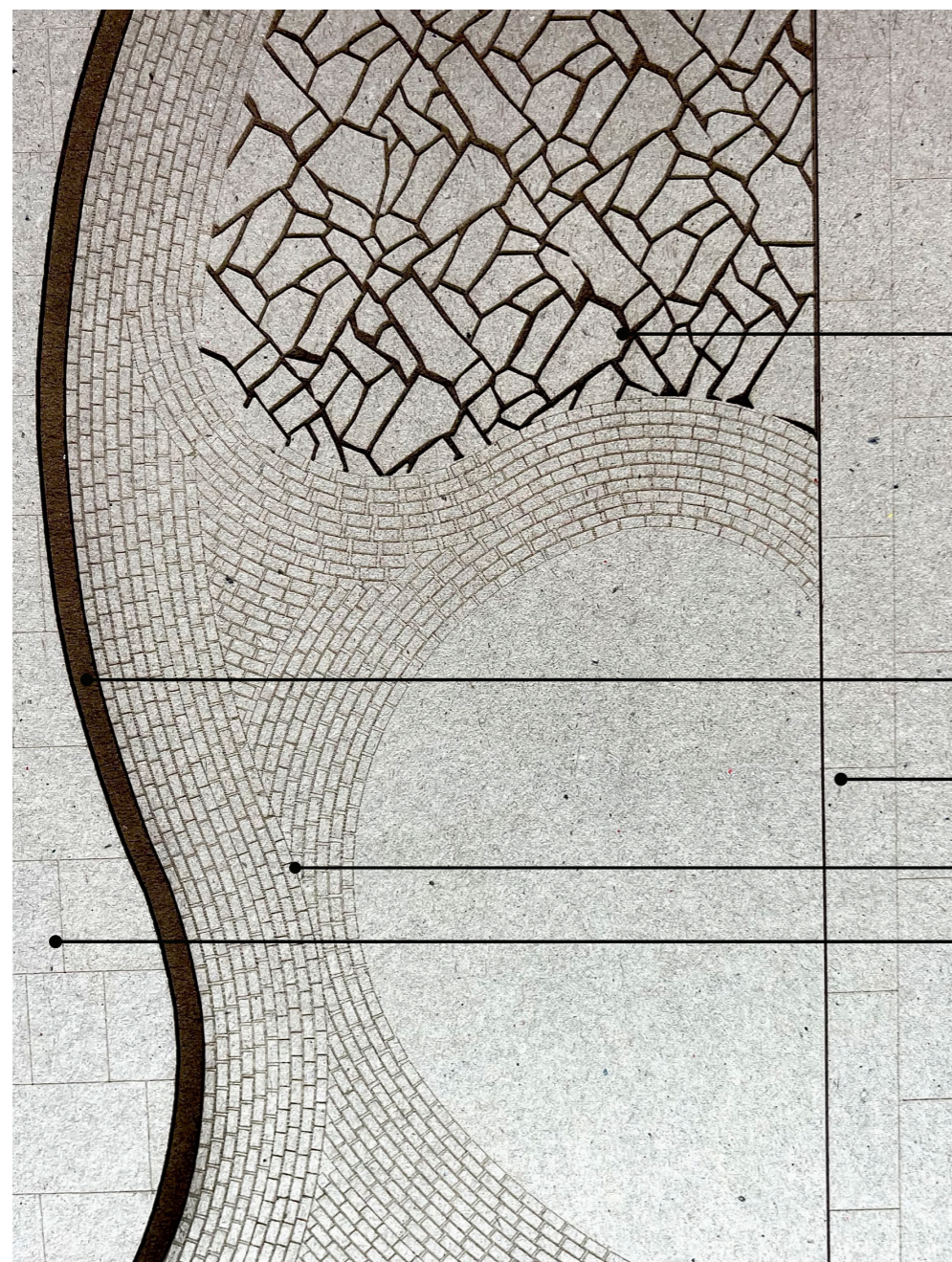
17



Paving

18

Paving Model 1:100



Proposed Crazy Paver.

Proposed reflective 'thread'. Potentially Copper inlay.

Existing Drain

Proposed cobble paving 100 x 50mm

Existing retained COS paver

Paving Model 1:25



Crazy Paver

Proposed reflective 'thread'. Potentially Copper inlay.

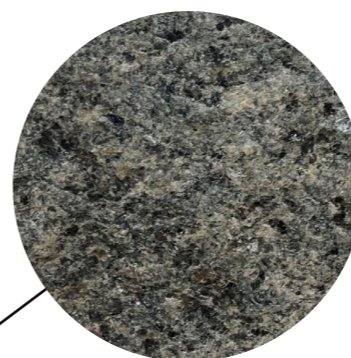
Proposed mounding extending from existing bitumen mounds at base of retained trees

Cobble paving 90 x 90mm

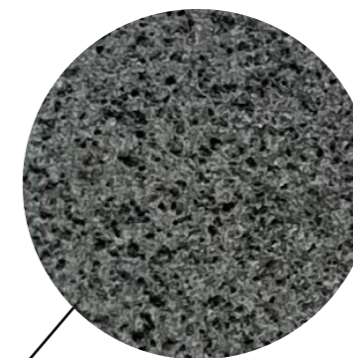
Indicative model of furniture. Refer to current Sibling detailed furniture package

Existing retained COS paver

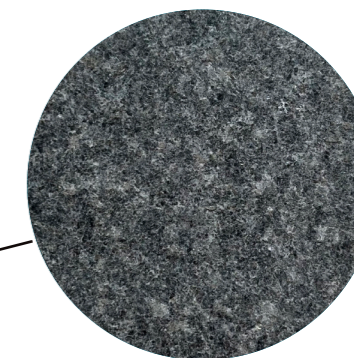
Paving Materials



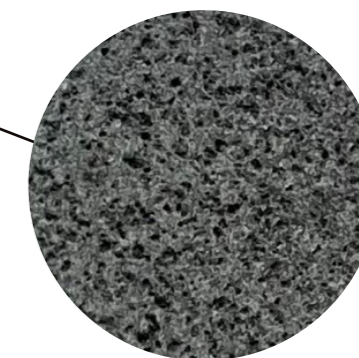
Body Paver
Austral Verde
 Standard COS dimensions
 (nom 450mm x 900mm)



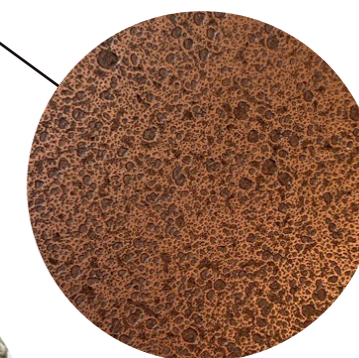
Ribbon Paving
Blue Stone
 Soft, Absorptive
 finishes to ribbon



Existing drain stone
Austral Black
 900mm x 300mm



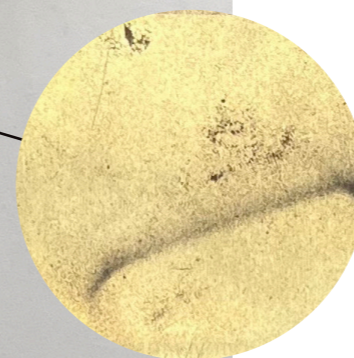
Crazy Paver
Blue Stone
 Reused Austral verde
 from removed paving
 zones



Furniture
*Steel frame with potential
 timber inlays*
 Reflects Lighting
 installation and allows
 furniture to visually float.



Tree Surround Surfacing
Resin Bonded Gravel
 Flexible to mitigate level
 changes



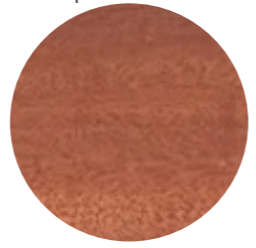
Reflective Inlay
Brass
 Consistent Ribbon along
 the length of the street.

Furniture

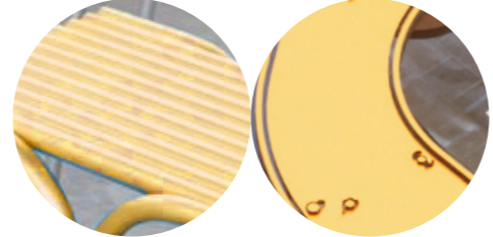
20



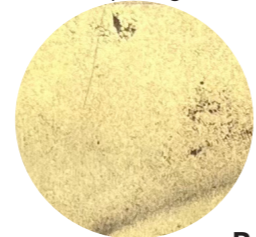
Timber Dowels
 Recycled timber dowels
 A warm place to sit and rest



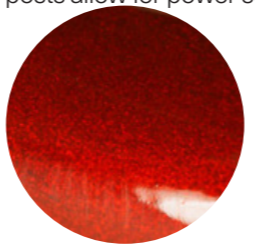
Reflective Top
 Painted Metal
 Different heights to allow different uses,
 embedded with cultural motifs



Reflective Brass
 Edge Strip
 Connected to golden thread
 in paving



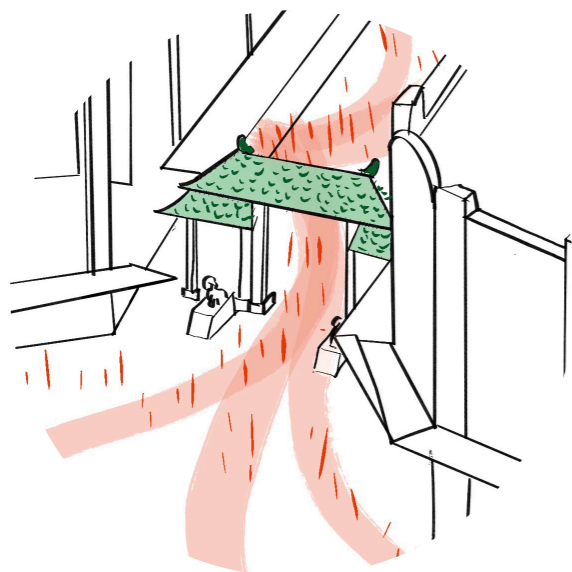
Robust Furniture Legs
 Painted Metal
 Larger posts allow for power supply



Rock base
 Heavy sandstone block
 Provides a natural, sturdy base



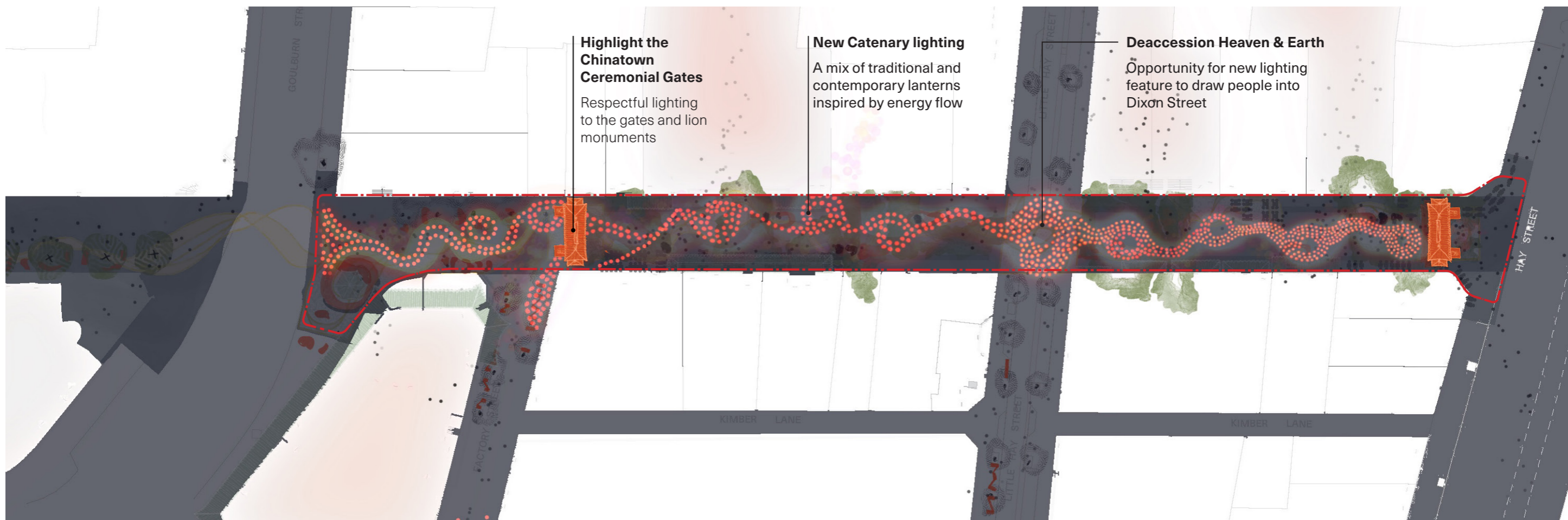
Lighting



LIGHTING
New creative lighting overlay that invites energy flow through the street and reinforces the traditional Chinatown identity with contemporary elements



21



Highlight the Chinatown Ceremonial Gates
Respectful lighting to the gates and lion monuments

New Catenary lighting
A mix of traditional and contemporary lanterns inspired by energy flow

Deaccession Heaven & Earth
Opportunity for new lighting feature to draw people into Dixon Street

Dixon Street Reimagined



22